

View-i2 Software

User's Guide



Installation

The View-i2 Software is simple to install and easy to use; it can be used to review your videos and GPS locations in addition to running reports. To install the software, connect the included SD card to your computer. If autorun is enabled on your PC, you should be notified that a new device has been connected to your computer. Select “Open Folder to View Files.” If you do not see this prompt, simply click on the Start icon in the lower left corner of your screen and choose My Computer (Windows XP) or Computer (Windows Vista and Windows 7) and open the Removable Drive labeled AVIC.

Once you’ve opened the AVIC drive, you should see several folders. Open the folder labeled “2CH PC Player ver x.x.x” to see the View-i2_setup file icon. Double-click on this icon to begin installing the View-i2 software. The installer will ask you what language you would like to use, if you want speed measured in miles or kilometers per hour, and if you would like to install a desktop and/or quickstart icon. It is suggested that you set up at least a desktop icon for easy access later. Once you’re done, you will be asked if you would like to open the View-i2 software.

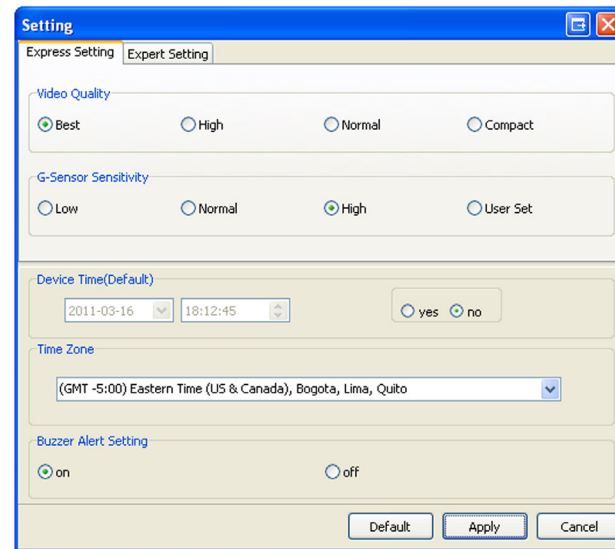
Loading a File



Loading a File (cont.)

When opening the View-i2 software, you will see the screen listed above. It will open with the SEARCH tab open. Before use, click on the Setup icon on the lower right hand side of the window. Open the SYSTEM folder on the View-i2's SD card, select user_setup.cfg, and click on the Open button.

Here, there are 2 tabs; Express Setting and Expert Setting, where you can adjust video quality, G-Sensor sensitivity, time, time zone, and buzzer settings. From the Expert Setting tab you can make more refined adjustments to sensitivity and how long recording segments are. It's not suggested that users adjust anything in the Expert Settings tab until they have some experience with the software. Once done, click the Apply button, and choose Save, and your settings will be loaded to the device the next time the SD card is inserted.



To take any action, you will first need to load a recorded file. This can be done in one of two ways:

1. Open a single file:

Click on the File folder button located on the lower right side of the window. Navigate to the SD card and choose a file in either the NORMAL or EVENT folder. Files in the NORMAL folder were created under constant recording. Files in the EVENT folder were created during event recording. Open the sub-folder from the date of your choice and double-click on a file to play it. Click on the check box to the left of each file you would like to view.

2. Open all files from a specific date:

In the SEARCH tab, click on the Folder Open button. Navigate to the SD card and choose a folder in either the NORMAL or EVENT folder. Once again, files in the NORMAL folder were created under constant recording and files in the EVENT folder were created during event recording. Choose a folder and select the OK button to load all the files in that folder to the SEARCH LIST box. Click on the check box to the left of each file you would like to view.

*Tip! When loading all files from a folder, you can hit the “Chain Play” button to have them play in sequence, one after the other.

Click on the check box in the top row to select or unselect all files at once.

When loading files from a specific date, you can choose search parameters in your file list. You can search or exclude by: date if you have loaded files from multiple dates, Event Type, Speed, or G-Sensor reading. This means you can load files from a specific date for only Event Recordings taken when the vehicle’s speed exceeded 70 miles per hour, for example.

To do so, fill in the check boxes for the parameters you would like to use, and select Create DB. It will create a database using the files you have selected in the SEARCH LIST, and after a few moments you should see a box saying “Make database complete.” Select OK, and then select SEARCH. This will filter out any files that don’t fit the criteria you selected. You can now also hit the Road Track button to view where each of the incidents occurred. After clicking on Road Track, select the View button in the upper right corner to view the map.

To play a file, highlight it in the SEARCH box, and hit the Play button on the control panel at the bottom of the window. You can use the buttons on this panel to skip to the previous or next file, search through the current file, play/pause playback, and stop playback completely.

To the right, the SPEED meter will allow you to speed up or slow down playback of the current file. The front-facing camera view will appear on the left and the rear-facing camera view will appear on the right. Speed will be displayed in the lower left corner. To get more information, you will want to select the INFORMATION tab.

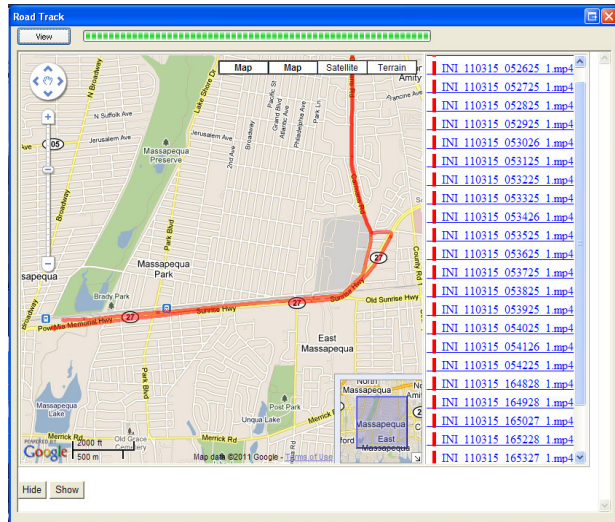


Current File Info

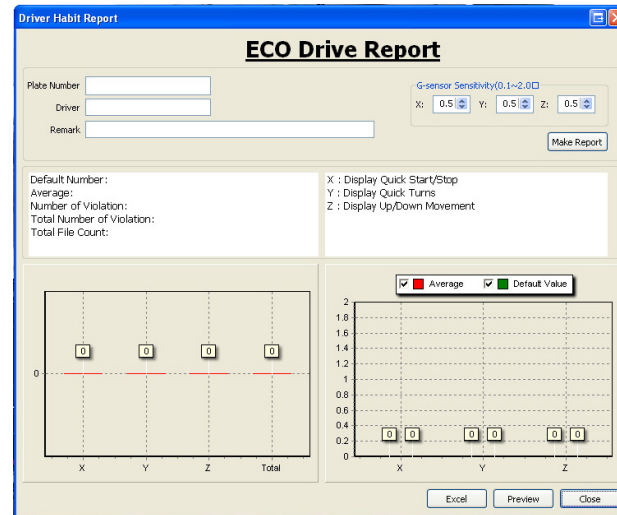
G-Sensor Recordings

Map

The INFORMATION tab is where you can view all of the information recorded in the file you are viewing in real time. On the left, beneath the external video screen, the name of the file you are viewing, the date and time, latitude, and longitude are listed, synced with the video playing above. Below that is the playback bar, which shows how long the current file is and how far into a file you are, and the G-Sensor graph which displays information about sudden shocks or bumps. You can click on the Big Chart button to display Speed and G-Sensor readings taken from the current file on a graph.



On the right, below the internal video screen, is a Google Maps display that will show the device's position as the files play in either map or satellite view. Clicking on the Road Track button will bring up a map displaying where all the segments containing GPS information were recorded on a single screen. You can filter Road Track reports by selecting Event Type, Speed, G-Sensor, and Time criteria and clicking the Create DB button. This will search all the files selected in the Search List.



Running ECO Drive Reports

Select all the files in the Search List that you would like to use in creating your report and click on the Create DB button. Once the “Create Database Complete” information box comes up, click on OK. Now, click on the Data Print icon. This will bring up the ECO Drive Report, where you can enter a vehicle's plate number, driver's name, and place some notes. Once entered, click on the Make Report button to generate a report based on driving habits: quick turns, sudden starts and stops, and bumps, taken from the G-Sensor in the View-i2. Reports can be printed from the Preview screen and exported for storage by clicking the Excel button.

Creating Event Reports

Event reports allow a user to essentially take a snapshot of everything that was occurring in a file at a given time. During playback, click on the Event Print icon to bring up the Image Capture window. Click the Add button to capture an image from the currently playing videos. Once you have added the images you would like, click on the Next button to open the Event Report window. Here you can Add a driver's plate number, name, and any remarks you would like. Click on the Preview button to view the information captured, including location as longitude and latitude, speed, date and time, G-Sensor information and location marked on a map. Use the icons in the top left corner of the window to print or store the report to your computer.

Glossary

ECO Drive Report: Drive report based off of G-Sensor and GPS information including speeds and sudden starts and stops.

G-Sensor: Sensor that measures sudden movements on three axes, up/down, left/right, forward/backward.

GPS: GPS stands for Global Positioning System. GPS uses satellites to triangulate the position of a device nearly anywhere on Earth.

