

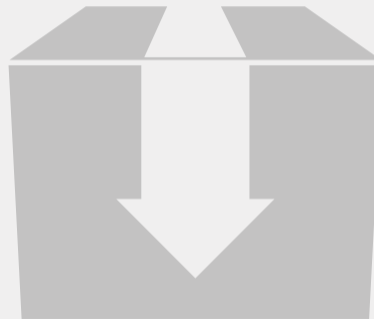
In-Car DVR HD Camera

Product Manual



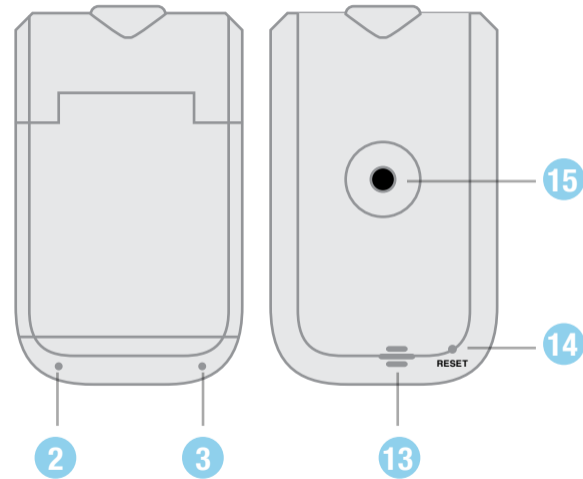
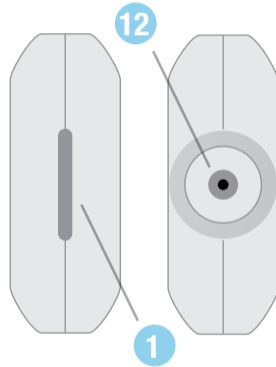
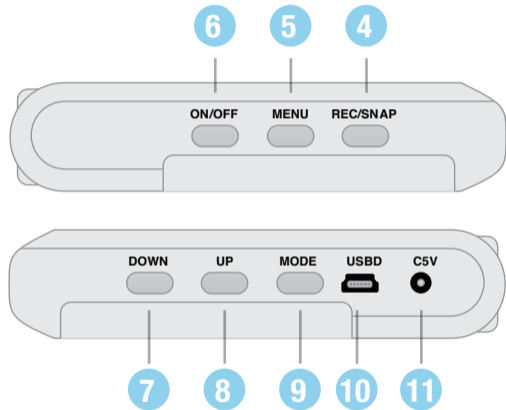
The In-Car DVR HD Camera is a simple video recorder designed for use in nearly any car or truck.

Its internal DVR records .AVI video and JPEG photos to an SD or MMC card and allows for immediate playback on its integrated LCD screen. Files can also be transferred and viewed on any computer with a USB port or SD card reader.



In the Box

Your box contains the HD Vehicle Camera, a USB cable, a DC 5V vehicle power adaptor, and a windshield mount.



1. SD/MMC Card Slot
2. Working (Blue) Indicator
Charging (Red) Indicator
3. Microphone
4. REC / Snap
5. Menu
6. Power
7. Down
8. Up
9. Mode Button
10. USB Slot
11. 5V Direct Current Slot
12. Lens
13. Speaker
14. Reset Hole
15. Mount Hole

Getting Started

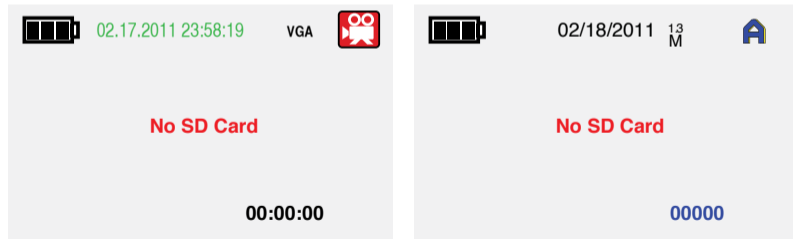
Your device can be powered two ways; from its internal battery, which is charged via USB, or by connecting it to your vehicle's power source. If you choose to use the internal battery, charge the device for at least 4 hours before first use. The LED indicator will glow while the device is charging and shut off once full. If using the vehicle power adaptor, the device will automatically power on when it receives power through your car.

This device records to standard SD and MMC cards with up to 32GB capacities. Make sure your card is formatted as FAT 16/32, the standard Windows format. If you aren't sure how to format an SD card, it can be done on the device itself, or you can find instructions here on how to do so on a PC: http://www.ehow.com/how_2112408_format-memory-card.html.



Recording Video

To power the device on, hold down the ON/OFF button for 3 seconds. The device will emit a beep and take a few seconds to boot, then automatically begin recording video and the LED indicator will blink Blue. To stop recording, tap the REC/SNAP button and you will notice the timer stops. Tapping REC/SNAP will start recording again. 20 minutes of video will take up about 1GB of space on a memory card.



Taking Photos

Tapping the MODE button will place the device in Photo Mode. Simply tap the REC/SNAP button to take a photo. The screen will flash to let you know a photo was captured.

Customizing Settings

To change your video settings, press the MENU button while in video mode. This will access the Video Output menu. In any menu, the UP and DOWN buttons will move through choices and the REC/SNAP button selects a highlighted option. Select Size to change video resolution.

- VGA 1280*960
- D1 720*480
- SXGA 640*480

- Select Time Stamp to choose how the time will display on your videos. You can choose to display time and date, date only, or turn the stamp off.
- Choose Motion Detect to turn motion activation on or off.
- Choose Audio Record to turn audio recording on or off.
- Record Time allows you to choose how large an individual file will be. You can choose to have videos recorded in 2, 5, or 15 minute segments. Videos will be saved at the end of each segment. Be aware that every time a file is saved there will be a gap of approximately 2 seconds before the next recording begins.
- Push the MENU button again to enter the Setup menu. From here you can format your memory card, choose a display language, Reset the device to manufacturer's settings, change the power frequency between 50 and 60Hz (note that 60Hz is standard in the Americas), and set the time and date on the device.
- To change photo quality, hit the MENU button while in Camera mode. Select Size to choose between 1.3 megapixel or VGA quality images.

Viewing Files on the LCD screen

Pressing the MODE button in the Photo Mode will change the device to Preview Mode. Here you can view photos and videos by pressing the UP and DOWN buttons. To view a video file, press the REC/SNAP button when you have the file on the screen and it will play back.

To delete a file, change to a list view of files, or change playback volume, press the MENU button. Use the UP and DOWN buttons to move through files and REC/SNAP to select an option.

Viewing Files on a Computer

To view files on a computer, you can either connect the device via USB cable or insert the SD card directly into your computer, or with an SD card reader. The device will appear as a removable storage device. Open the drive and open the DCIM folder and the 100DSCIM folder to view your recordings. To play back video, we suggest the use of VLC Player, which can be downloaded for free at <http://www.videolan.org>.

Troubleshooting

Problem: The camera won't record

Solution: Make sure the switch on the SD card is not in the Lock position. Information can not be stored to a locked SD card. Once sure the Lock switch is set correctly, try formatting the SD card.

Problem: The camera is "stuck" and won't change modes

Solution: Just like a computer, a DVR can "lock up" or "freeze". If this occurs, use a paper clip or similar small thin object to press the reset button located on the back of the unit. This will power the device off and allow you to restart.

Glossary

DVR: short for Digital Video Recorder, this abbreviation refers to any device capable of recording and saving a digital video file. This is the high-tech equivalent of a VCR.

SD Card: SD stands for Secure Digital. Available in a number of capacities, these cards can be used to store data by a wide variety of devices, from cellular phones to digital cameras to GPS receivers. Currently, the highest capacity of SD card is 32GB.

USB: Universal Serial Bus. USB is currently the standard method for connecting devices to a computer.



WWW.BRICKHOUSESECURITY.COM