



# Spark Nano Users Manual



Contents of the Box ..... 3

Sign Up for Service..... 4

LEDS ..... 5

Viewing Data ..... 7

Downloading Data ..... 8

Microsoft Virtual Earth ..... 9

Google Earth ..... 11

Reports ..... 12

Support ..... 15

GeoFences ..... 16

Panic/SOS Alert..... 18

Troubleshooting ..... 19

For Tech Support call 646.833.1555

**Contents of the Box**



Spark Nano



Cellular SIM Card



Case



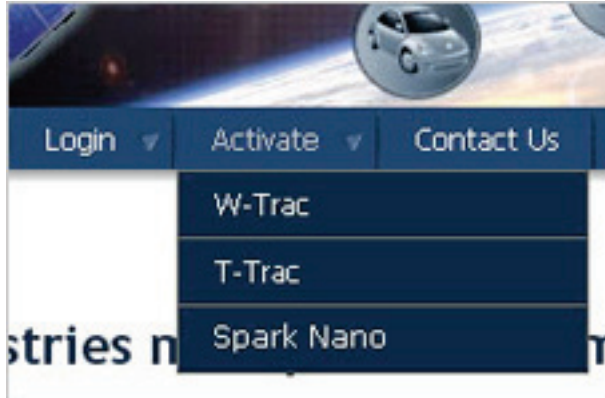
Wall Charger



\* The missing card is already installed inside of the Spark Nano. Please keep the SIM card holder pictured above. You will need this number during the activation process.

## Sign Up for Service

- 1) Go to [LightningGPS.com](http://LightningGPS.com) to sign up.



- 2) Put the mouse cursor over “Activate” under the main menu, then click on “Spark Nano”, or click on “Activate” and then click on “Spark Nano” on the next page.
- 3) Pay the activation fee and sign up for monthly service. The activation of your tracker will not be completed until these payments are received.



- 4) LightningGPS.com accepts payment with PayPal or Credit card. You may also call us directly and sign up over the phone. 646-833-1555 8:30-5:00 Monday-Friday
- 5) Follow the instructions on the website and provide the required information. Be sure that the name associated with the PayPal account and credit card or bank account match.

There are several options for GPRS service. Visit our website for current pricing.

## LEDS



### **LED1**

#### **Red**

Case 1: The power key has been pressed

Case 2: The device received a valid configuration command

#### **Green**

Case 1: Fast flash means network searching

Case 2: Slow flash means network is registered

Case 3: Solid means SIM pin locked

#### **Blue**

Fast flash means the GPS is fixing. It will be solid for 2 seconds when GPS is fixed.

## **LED2**

### **Red**

Case 1: Solid means power is low

Case 2: Slow flashes when charging

### **Green**

Case 1: Solid means charge completed.

Case 2: After inserting the serial port, this led will illuminate for 8 seconds, which means it is checking battery status.

### **Blue**

Case 1: Geo-Fence mode

Blue LED2 will be solid if the function key is pressed. This button is located on the side of the tracker near the SIM card holder. See Section 12 for a photo of this button. After that, if the user presses the function key again in 2 seconds the blue LED2 will be off and the new Geo-Fence center will be set after a successful GPS fix.

Case 2: SOS

The blue LED2 will be solid when the function key is pressed. It will be off after the function key released. User should press the function key for at least 3 seconds to start SOS report.

## Viewing Data

- 1) Your map page requires Internet Explorer 6.0 or higher in order to function properly. To view dates, times and speed of a record, move your cursor over a specific point.

### Virtual Earth



- 2) Use the calendar to view historical data of the movements your tracker has made. Blue dates have data, white dates do not. To change the month click the arrows on the top left and right.



## Downloading Data

The software automatically saves all location information sent by your tracker to our server. If you wish to keep backups of your tracking data or to use the data in other mapping programs, simply select the date you wish to download using the calendar. Then click on the “Download .csv data” link. The left photo shows the calendar from the current day and the right photo shows the calendar from 2 days before.

You cannot download data for the current day.

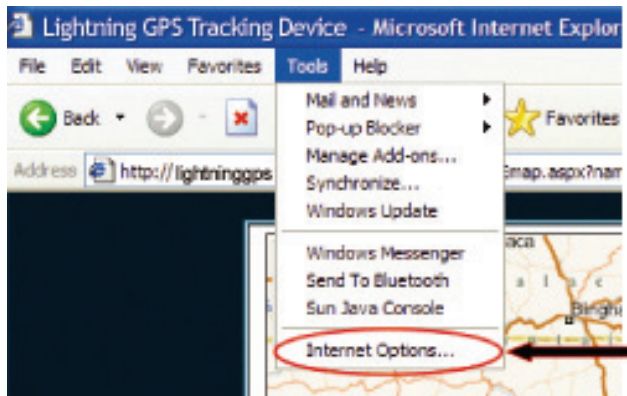


Dates which have saved tracking data will appear in blue and the current day will be displayed in yellow.

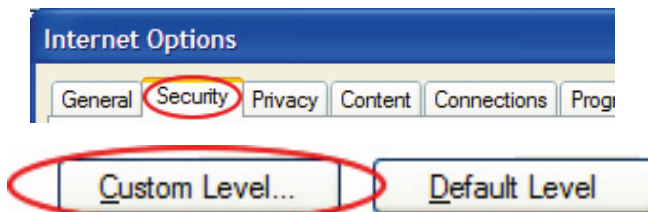


## Microsoft Virtual Earth

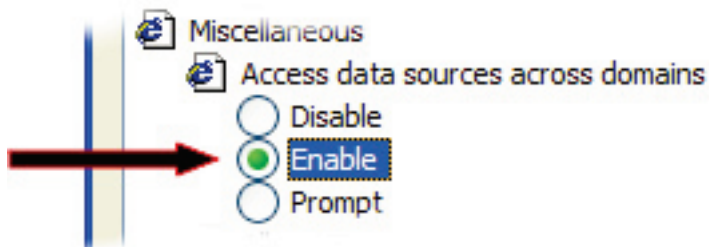
- 1) If you do not see an address when clicking on a breadcrumb, you will need to change your Internet Explorer browser setting. Select the "Tools" drop down menu, and click on "Internet Options..."



- 2) Select the "Security" tab. Then Select "Custom Level."

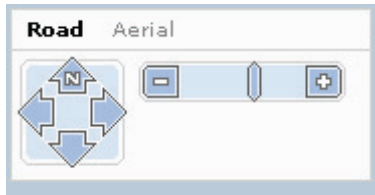


- 3) Make sure that the "Access data sources across domains" option is enabled.



- 4) Most major US cities have special “Birds Eye View” mapping. When Birds Eye View mode is available for an area you are viewing, the navigation tool shown to the right will change to allow you to switch to Birds Eye View.

*No Birds Eye View Available*

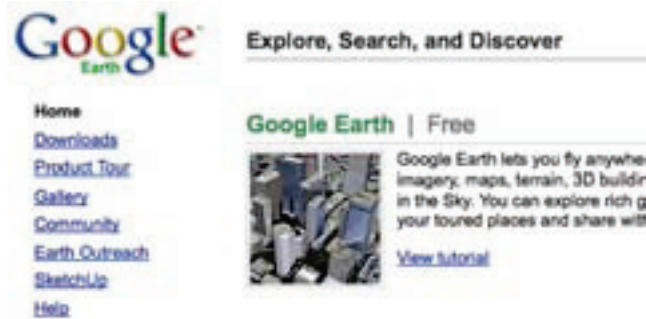


*Birds Eye View Available*



## Google Earth

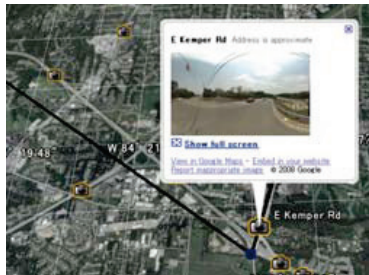
- 1) Download the free version of Google Earth from <http://earth.google.com>.



- 2) After installation, select "Google Earth" under the CONTROL panel on your tracking page.



- 3) Google Earth will automatically open and display the current track on that map.
- 4) For help with using Google Earth's features, visit <http://earth.google.com>.



## Reports

Click the “Driving Report” link under “CONTROL” panel. The report will display in a new window. You must use Internet Explorer to view the reports.



Travel data includes street address, duration of stops, mileage, speed and other daily travel data.

### Driving Report for 806283 on Tuesday, November 25, 2008

DepartTm	Address	Max Spd	ArriveTm	DrvTmMin	Dx	TmParked
12:29:30 PM	-26.1368832,28.2281267	2	12:38:11 PM	9	1.3	
2:50:54 PM	-26.129053,28.2327892	30	2:50:54 PM	0	0	2.2 hrs
5:56:38 PM	-26.138573,28.2324906	30	6:02:38 PM	6	2.8	3.1 hrs
6:52:49 PM	-12.9990157,28.6597041	0	7:01:14 PM	8	1.9	50 mins
9:47:02 PM	-12.968566,28.63823	38	9:58:32 PM	12	4.4	2.8 hrs
Destination	-13.0361417,28.6888391					
<b>Totals:</b>				<b>0h 35m</b>	<b>10.4 miles</b>	

These reports can be printed by selecting “File” and then “Print” from within Internet Explorer.

**Stats:**

Click the “Stats” link. The report will display in a new window. You must use Internet Explorer to view the reports.



The Stats link allows you to see the data for each day data was sent for the month displayed and the monthly/yearly total are of Miles Driven for each month.

**September 2008 Stats for 345862**

Day	DxDriven	DriveTime	IdleTime	StartTime	StartAdr	EndTime	EndAdr
3	24.1	3.9	1.7	17:34	(Start Address Will Appear Here.)	23:11	(End Address Will Appear Here.)
4	30.6	2.9	3.6	11:45	(Start Address Will Appear Here.)	18:15	(End Address Will Appear Here.)
<b>Totals:</b>	<b>54.7 Miles</b>	<b>6.8 hrs</b>	<b>5.3 hrs</b>				

These reports can be printed by selecting “File” and then “Print” from within Internet Explorer.

**Miles  
Driven  
2008**

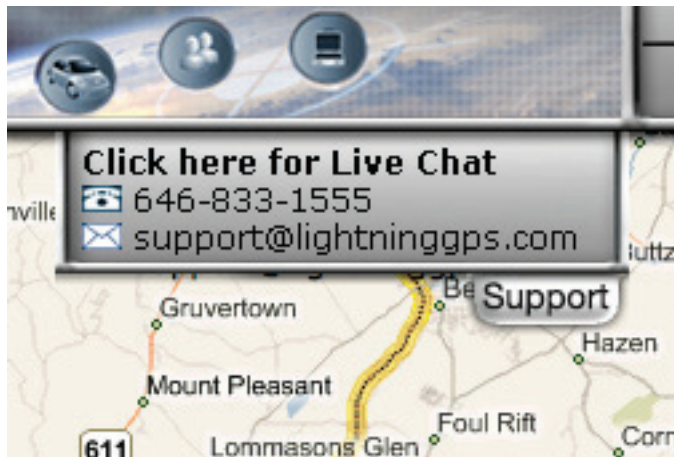
Month	345862
Jan	0
Feb	0
Mar	0
Apr	0
May	0
Jun	0
Jul	0
Aug	0
Sep	54.6
Oct	0
Nov	0
Dec	0
<b>Totals:</b>	<b>54.6</b>

## Support

- 1) For support, please click the “Support” tab located at top of the map.



- 2) You can choose to contact us by live chat, phone, or email.



## GeoFences

A GeoFence is a virtual fence (a square around a certain location) that you can preset online. When the Spark Nano enters/leaves the fence, you will receive an alert via email or a text message on your cellular phone by entering a plus symbol, your country code followed by your cellular phone number. You will receive a text message on your phone when the GeoFence has been triggered.



- 1) To set up a GeoFence, first click the “GeoFence” button.
- 2) Click on the drop down window “Both”. Under this menu you can choose whether you want an alert when the vehicle enters and exits, only enters, only exits, or one shot (alert when the vehicle exits one time). Once a GeoFence is set, it will remain in place until it is deleted. This does not apply for the one shot option.



- 3) Enter the email address you wish to receive GeoFence alerts on.
- 4) You will need to enter a password. The password is always 0000, unless specified otherwise.
- 5) Draw a GeoFence by double clicking on one part of the map and then double clicking again in a different location, surrounding the area you would like to include. An area will be highlighted on the map indicating the GeoFence area. If you are not satisfied, you can repeat this procedure to draw a different GeoFence. Once you are satisfied with the area of the fence, click on “SET”.



This can be repeated multiple times to set multiple GeoFences. To view the GeoFences that are set, click on the GeoFence button. The Geo Fences are indicated on the map.

- 6) To delete a GeoFence, enter the password and click on “DELETE” indicated on the right-hand part of the GeoFence. A window pops up indicating that the GeoFence has been deleted. You must do this for every GeoFence created.

## **Panic/SOS Alert**

### **SOS Button:**

When pushed and held down for 2 seconds, the panic button will cause the unit to send 20 location reports, 2 minutes apart.



These location points will display on your map page with an SOS alert message. The tracker can be programmed to send the alert messages to a cell phone if you prefer.

For more information please call 646-833-1555

## Troubleshooting

### 1) *“My tracker has stopped sending data.”*

Retrieve your unit and replace or recharge the batteries. Try turning the unit off and plugging it into the 12-volt power adapter. Then turn it back on. If you still do not receive data, the unit may need to be reprogrammed. Please contact our support department for assistance.

### 2) *“The “FIX LED” does not illuminate.”*

The unit should get a GPS location fix within a few minutes. If you do not receive a fix, take the unit outside and wait for a few minutes while the unit has a clear view of the sky.

### 3) *“My tracking page displays yesterday’s data.”*

Data is not updated on the map until new positions are reported. Look at the time of the “last report” on the map. If the time of the last report is before midnight central standard time, the current data is from the day before. Your tracker may have stopped sending data, please retrieve the tracker for testing.

If you continue to have trouble or need assistance with your tracker, please call our customer support department at 646-833-1555.